

Leeway Striker

Fast, efficient and versatile autonomous-capable hydrographic survey vessel.

Leeway Striker is 22 metres in length, with a top speed of approximately 55 knots. The vessel is a high-performance craft optimized for fast transit to and from work sites. Leeway Striker's top speed, combined with efficient survey gear arrangement make the vessel a perfect asset for near-to-mid shore survey operations.



AUTOPILOT A sophisticated autopilot is fitted onboard the vessel, enabling semi-autonomous survey operations with little-to-no input required from the operator. The system is self-learning and adapts to the external environment, ensuring straight and accurate line-keeping capabilities. Planned route tracks can be pre-loaded for the vessel to follow.



CONFIGURABLE LIFTING ARRANGEMENTS Multiple lifting locations make it easy to deploy and recover a wide array of fixed and towed equipment. Three "sockets" accept movable davits along the gunwales of the working deck. The stern A-frame has a lifting capacity of 450 kg and can be used for equipment launch, recovery and towing.



USM POLES Both port and starboard gunwales of Leeway Striker are fitted with Universal Sonar Mount (USM) poles. The core of the USM design allows for: easy setup, versatility, portability, repeatable pole technology, safe operation and efficiency to get a job done so the user can focus on real-time decision making. Each pole can be raised and rotated inboard to allow for safe berthing and stowage while not in use.



MULTIPLE TOW OPTIONS Towing options vary on the working deck of Leeway Striker. The rear-mounted A-frame is equipped with three mounting locations for cables and lines, while a modular "socket" design can accommodate outriggers and davits in forward and aft positions along the gunwales. This creates a handful of options to tow multiple pieces of equipment simultaneously.

General Specifications

Registry: Halifax, Nova Scotia 🇨🇦

Built: Tampa Bay, Florida

Official Number: 841903

Length: 22.3 metres

Beam: 5 metres

GRT: 65 tonnes

Top Speed: 55 knots

Cruising Speed: 30 knots

Survey Speed: 2-10 knots

Fuel Capacity: 7,200 litres

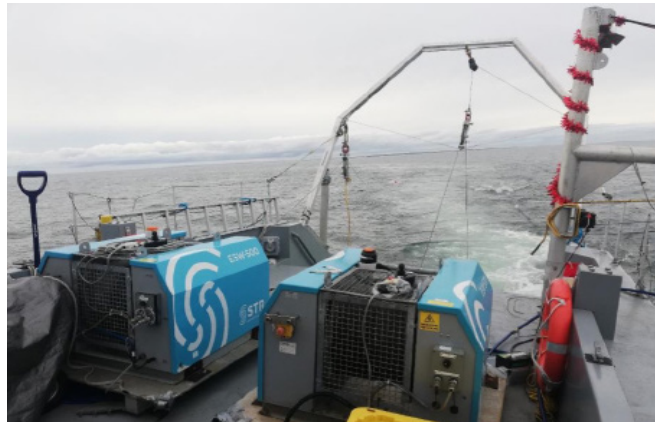
Constuction: Composite

Propulsion: 3x Rolls Royce jets

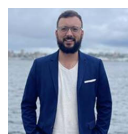
Crew: 2-4

POB w/o Crew: 4-6

Accomodations: 6 berths, 1 head
w/ shower, galley, work stations



Inquiries



Greg Veinott, B.Mgmt

CCO

+1-902-442-4654

greg.veinott@leewaymarine.ca

Safety & Certifications

Leeway Striker is certified Near Coastal 2 with Transport Canada. The vessel has a full safety management plan and life saving equipment for all crew and clients on board.

Working Deck

Leeway Striker's aft deck can be configured to fit the needs of a job with various mounting and lifting arrangements. The deck includes an A-frame with 450 kg load capacity, movable side davits with 340 kg load capacities, port and starboard USM pole mounts, pot hauler and water-level aft dive platform for deployment and recovery of scientific equipment. Anti-skid coatings reduce tripping and slipping chances on the deck, which has direct door, window and transit access to the wheelhouse and work stations.

