

# LeeWay Striker

**Fast, efficient and versatile autonomous-capable hydrographic survey vessel.**

LeeWay Striker is 22 metres in length, with a top speed of approximately 55 knots. The vessel is a high-performance craft optimized for fast transit to and from work sites. LeeWay Striker's top speed, combined with efficient survey gear arrangement make the vessel a perfect asset for near-to-mid shore survey operations.



**AUTOPILOT** A sophisticated autopilot is fitted onboard the vessel, enabling semi-autonomous survey operations with little-to-no input required from the operator. The system is self-learning and adapts to the external environment, ensuring straight and accurate line-keeping capabilities. Planned route tracks can be pre-loaded for the vessel to follow.



**CONFIGURABLE LIFTING ARRANGEMENTS** Multiple lifting locations make it easy to deploy and recover a wide array of fixed and towed equipment. Three "sockets" accept movable davits along the gunwales of the working deck. The stern A-frame has a lifting capacity of 450 kg and can be used for equipment launch, recovery and towing.



**USM POLES** Both port and starboard gunwales of LeeWay Striker are fitted with Universal Sonar Mount (USM) poles. The core of the USM design allows for: easy setup, versatility, portability, repeatable pole technology, safe operation and efficiency to get a job done so the user can focus on real-time decision making. Each pole can be raised and rotated inboard to allow for safe berthing and stowage while not in use.



**MULTIPLE TOW OPTIONS** Towing options vary on the working deck of LeeWay Striker. The rear-mounted A-frame is equipped with three mounting locations for cables and lines, while a modular "socket" design can accommodate outriggers and davits in forward and aft positions along the gunwales. This creates a handful of options to tow multiple pieces of equipment simultaneously.

# General Specifications

Registry: Halifax, Nova Scotia 🇨🇦

Built: Tampa Bay, Florida

Official Number: 841903

Length: 22.3 metres

Beam: 5 metres

GRT: 65 tonnes

Top Speed: 55 knots

Cruising Speed: 30 knots

Survey Speed: 2-10 knots

Fuel Capacity: 7,200 litres

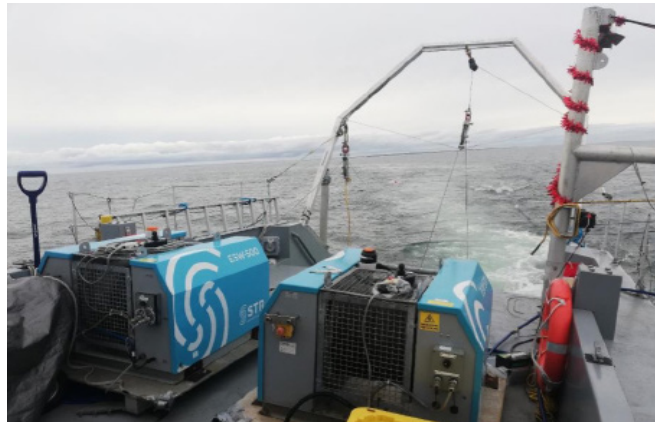
Constuction: Composite

Propulsion: 3x Rolls Royce jets

Crew: 2-4

POB w/o Crew: 4-6

Accomodations: 6 berths, 1 head  
w/ shower, galley, work stations



## Inquiries



Jamie Sangster, P.Eng, MSc, CD  
CEO  
+1-902-442-4654  
[contact@leewaymarine.ca](mailto:contact@leewaymarine.ca)

## Safety & Certifications

LeeWay Striker is certified Near Coastal 2 with Transport Canada. The vessel has a full safety management plan and life saving equipment for all crew and clients on board.

## Working Deck

LeeWay Striker's aft deck can be configured to fit the needs of a job with various mounting and lifting arrangements. The deck includes an A-frame with 450 kg load capacity, movable side davits with 340 kg load capacities, port and starboard USM pole mounts, pot hauler and water-level aft dive platform for deployment and recovery of scientific equipment. Anti-skid coatings reduce tripping and slipping chances on the deck, which has direct door, window and transit access to the wheelhouse and work stations.

